



The Perfect Support for Your Tank

LKTC Tank Leg

PD 65104 GB3 2002-02

Application

Stainless steel tank leg type LKTC is used for free standing stainless steel tanks or vessels where adjustable supports is necessary to ensure stability.

Standard design

LKTC consists of a cylindrical welding piece with an internal thread which takes an adjustable cylinder-shaped spindle. LKTC is designed so that it can stand either on the floor or on a stainless steel baseplate. The baseplate has a ball socket and is used where the floor is not completely horizontal to ensure stable support.

The design ensures that the legs are easy to clean.

Materials

Steel parts: Stainless steel AISI 304.
 Finish: Base plate: Mat.
 Other parts: Semi bright.



Technical data

Size	Max. static load (N)	Floor area of baseplate (mm ²)
¾"	75000	2600
1"	100000	5000
1½"	160000	7800

Dimensions (mm)

Size	¾"	1"	1½"
A	38	53	80
B	35.5	39.8	65.3
C	58	80	100
D	¾"	1"	1½"
E	35	40	45
F	5	5	5
Lmin.	20	20	20
Lmax.	35	50	60
R	15	15	25
T	4	6	8
Weight (kg)	0.43*	0.83*	2.25*

* = incl. baseplate.

Fig.1. LKTC, Tank leg.

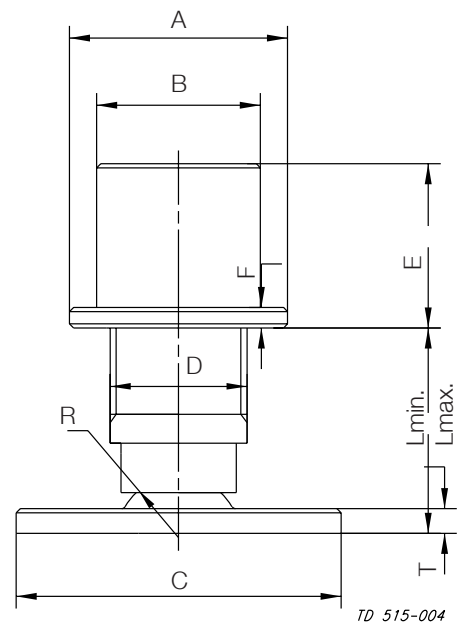


Fig.2. Dimensions.

Ordering

Tanklegs without base plate

¾" 9611-71-029-0

1" 9611-71-030-0

1½" 9611-71-032-0

Tanklegs with base plate

¾" 9611-71-022-0

1" 9611-71-023-0

1½" 9611-71-025-0

How to contact Alfa Laval

Contact details for all countries are continually updated on our website. Please visit www.alfalaval.com to access the information direct.