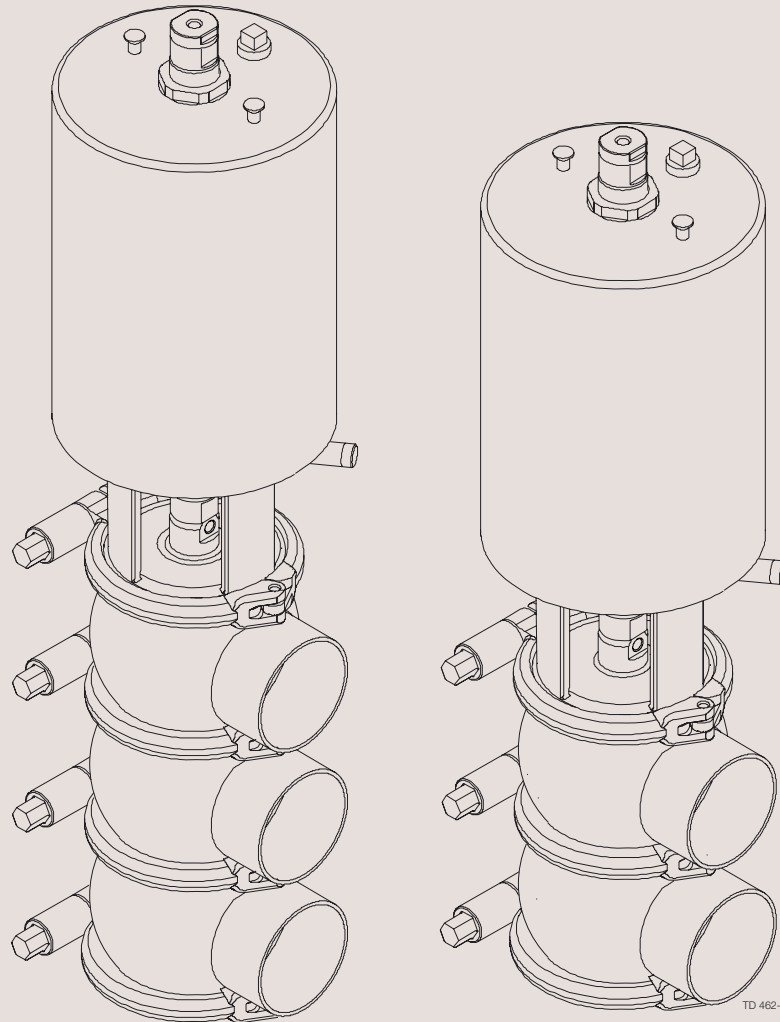




## Spare Parts

### Unique Single Seat Valve - Reverse Acting



TD 462-101\_3

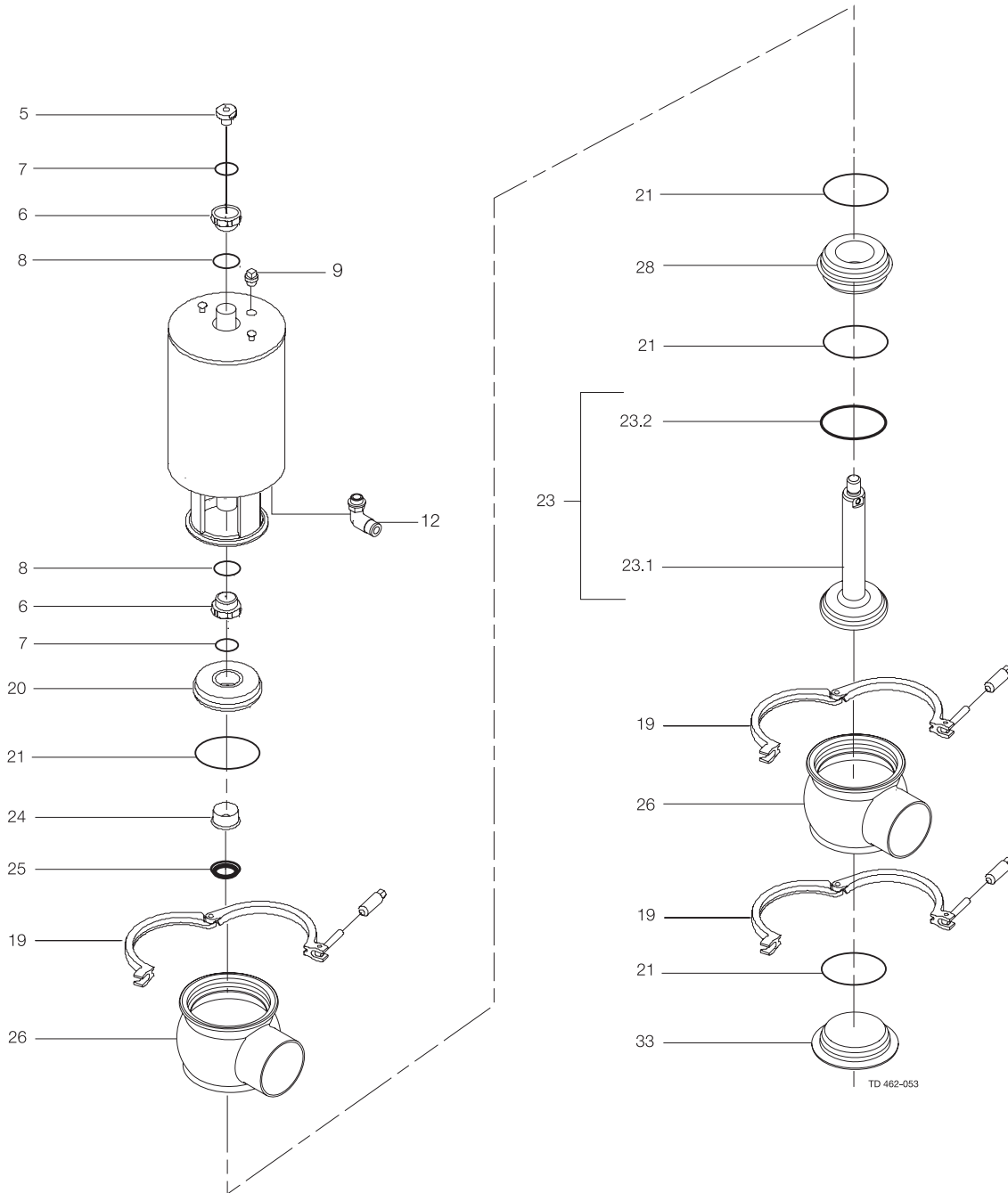


## Table of contents

---

*The information herein is correct at the time of issue but may be subject to change without prior notice*

|  |    |
|--|----|
| 1. Unique Single Seat Valve - Reverse Acting Shut off Valve 25-101.6 mm/DN25-100 ..... | 4  |
| 2. Unique Single Seat Valve - Reverse Acting Change-over Valve 25-101.6 mm/DN25-100    | 6  |
| 3. Mounting Tool - Unique Single Seat Valve - Reverse Acting .....                     | 10 |



## Unique Single Seat Valve - Reverse Acting Shut off Valve 25-101.6 mm/DN25-100

| Pos               | Qty  | Denomination  | DN 25<br>25 mm               | DN 40<br>38 mm               | DN 50<br>51 mm               | DN 65<br>63.5 mm               | DN 80<br>76.1 mm               | DN 100<br>101.6 mm               |
|-------------------|------|---|------------------------------|------------------------------|------------------------------|--------------------------------|--------------------------------|----------------------------------|
| <b>Actuator</b>   |      |   |                              |                              |                              |                                |                                |                                  |
|                   |      | Actuator, complete (NO-RA) .....                        | 9613-1548-06                 | 9613-1548-06                 | 9613-1548-07                 | 9613-1548-08                   | 9613-1548-09                   | 9613-1548-10                     |
|                   |      | Actuator, complete (NC-RA) .....                        | 9613-1548-01                 | 9613-1548-01                 | 9613-1548-02                 | 9613-1548-03                   | 9613-1548-04                   | 9613-1548-05                     |
|                   |      | Actuator, complete (A/A) .....                          | 9613-1548-11                 | 9613-1548-11                 | 9613-1548-12                 | 9613-1548-13                   | 9613-1548-14                   | 9613-1548-15                     |
| 5                 | 1    | Adapter .....   | 9613-1274-01                 | 9613-1274-01                 | 9613-1274-01                 | 9613-1274-01                   | 9613-1274-01                   | 9613-1274-01                     |
| 6                 | □ 2  | Bushing .....   |                              |                              |                              |                                |                                |                                  |
| 7                 | □ 2  | O-ring .....  |                              |                              |                              |                                |                                |                                  |
| 8                 | □ 2  | O-ring .....  |                              |                              |                              |                                |                                |                                  |
| 9                 | 1    | Plug .....  | 9613-4141-01                 | 9613-4141-01                 | 9613-4141-01                 | 9613-4141-01                   | 9613-4141-01                   | 9613-4141-01                     |
| 12                | 1(2) | Air fitting .....                                       | 9611-99-1988                 | 9611-99-1988                 | 9611-99-1988                 | 9611-99-1988                   | 9611-99-1988                   | 9611-99-1988                     |
| <b>Clamp</b>      |      |   |                              |                              |                              |                                |                                |                                  |
| 19                | 3    | Clamp .....   | 9612-9393-03                 | 9612-9393-03                 | 9612-9393-04                 | 9612-9393-05                   | 9612-9393-06                   | 9612-9393-07                     |
| <b>Bonnet</b>     |      |   |                              |                              |                              |                                |                                |                                  |
| 20                | 1    | Bonnet .....  | 9613-1271-02                 | 9613-1271-02                 | 9613-1271-03                 | 9613-1271-04                   | 9613-1271-05                   | 9613-1271-06                     |
| 21                | ◆ 4  | O-ring, EPDM (standard) .....                           |                              |                              |                              |                                |                                |                                  |
|                   | 4    | O-ring, HNBR .....                                      |                              |                              |                              |                                |                                |                                  |
|                   | 4    | O-ring, FPM .....                                       |                              |                              |                              |                                |                                |                                  |
| 24                | 1    | Bushing .....   | 9613-1250-02                 | 9613-1250-02                 | 9613-1250-02                 | 9613-1250-02                   | 9613-1250-02                   | 9613-1250-02                     |
| 25                | ◆ 1  | Lip seal, EPDM (standard) .....                         |                              |                              |                              |                                |                                |                                  |
|                   | 1    | Lip seal, HNBR .....                                    |                              |                              |                              |                                |                                |                                  |
|                   | 1    | Lip seal, FPM .....                                     |                              |                              |                              |                                |                                |                                  |
| 33                | 1    | Lower bonnet .....                                      | 9613-1301-02                 | 9613-1301-02                 | 9613-1301-03                 | 9613-1301-04                   | 9613-1301-05                   | 9613-1301-06                     |
| <b>Seat</b>       |      |   |                              |                              |                              |                                |                                |                                  |
| 28                | 1    | Seat .....  | 9613-1275-01                 | 9613-1275-02                 | 9613-1275-03                 | 9613-1275-04                   | 9613-1275-05                   | 9613-1275-06                     |
| <b>Valve Body</b> |      |   |                              |                              |                              |                                |                                |                                  |
| 26                | 2    | Valve body, upper, 1 port ISO ....                      | 9613-1393-01                 | 9613-1393-03                 | 9613-1393-05                 | 9613-1393-07                   | 9613-1393-09                   | 9613-1393-11                     |
|                   | 2    | Valve body, upper, 2 ports ISO ...                      | 9613-1393-02                 | 9613-1393-04                 | 9613-1393-06                 | 9613-1393-08                   | 9613-1393-10                   | 9613-1393-12                     |
|                   | 2    | Valve body, upper, 1 port DIN ....                      | 9613-1394-01                 | 9613-1394-03                 | 9613-1394-05                 | 9613-1394-07                   | 9613-1394-09                   | 9613-1394-11                     |
|                   | 2    | Valve body, upper, 2 ports DIN ...                      | 9613-1394-02                 | 9613-1394-04                 | 9613-1394-06                 | 9613-1394-08                   | 9613-1394-10                   | 9613-1394-12                     |
| <b>Valve Plug</b> |      |   |                              |                              |                              |                                |                                |                                  |
| 23                | 1    | Plug, shut off RA, ISO, complete, EPDM (standard) ..... | 9613-1276-01                 | 9613-1276-02                 | 9613-1276-03                 | 9613-1276-04                   | 9613-1276-05                   | 9613-1276-06                     |
|                   | 1    | Plug, shut off RA, ISO, complete, HNBR .....            | 9613-1276-13                 | 9613-1276-14                 | 9613-1276-15                 | 9613-1276-16                   | 9613-1276-17                   | 9613-1276-18                     |
|                   | 1    | Plug, shut off RA, ISO, complete, FPM .....             | 9613-1276-25                 | 9613-1276-26                 | 9613-1276-27                 | 9613-1276-28                   | 9613-1276-29                   | 9613-1276-30                     |
|                   | 1    | Plug, shut off RA, DIN, complete, EPDM (standard) ..... | 9613-1276-07                 | 9613-1276-08                 | 9613-1276-09                 | 9613-1276-10                   | 9613-1276-11                   | 9613-1276-12                     |
|                   | 1    | Plug, shut off RA, DIN, complete, HNBR .....            | 9613-1276-19                 | 9613-1276-20                 | 9613-1276-21                 | 9613-1276-22                   | 9613-1276-23                   | 9613-1276-24                     |
|                   | 1    | Plug, shut off RA, DIN, complete, FPM .....             | 9613-1276-31                 | 9613-1276-32                 | 9613-1276-33                 | 9613-1276-34                   | 9613-1276-35                   | 9613-1276-36                     |
| 23.1              | 1    | Plug, shut off RA, ISO .....                            | 9613-1498-01                 | 9613-1399-02                 | 9613-1399-03                 | 9613-1399-04                   | 9613-1399-05                   | 9613-1399-06                     |
|                   | 1    | Plug, shut off RA, DIN .....                            | 9613-1498-02                 | 9613-1399-08                 | 9613-1399-09                 | 9613-1399-10                   | 9613-1399-11                   | 9613-1399-12                     |
| 23.2◆             | 1    | Plug seal, EPDM (standard) .....                        |                              |                              |                              |                                |                                |                                  |
|                   | 1    | Plug seal, HNBR .....                                   |                              |                              |                              |                                |                                |                                  |
|                   | 1    | Plug seal, FPM .....                                    |                              |                              |                              |                                |                                |                                  |
|                   |      |   | <b>DN 25</b><br><b>25 mm</b> | <b>DN 40</b><br><b>38 mm</b> | <b>DN 50</b><br><b>51 mm</b> | <b>DN 65</b><br><b>63.5 mm</b> | <b>DN 80</b><br><b>76.1 mm</b> | <b>DN 100</b><br><b>101.6 mm</b> |

### Service kit for Actuator

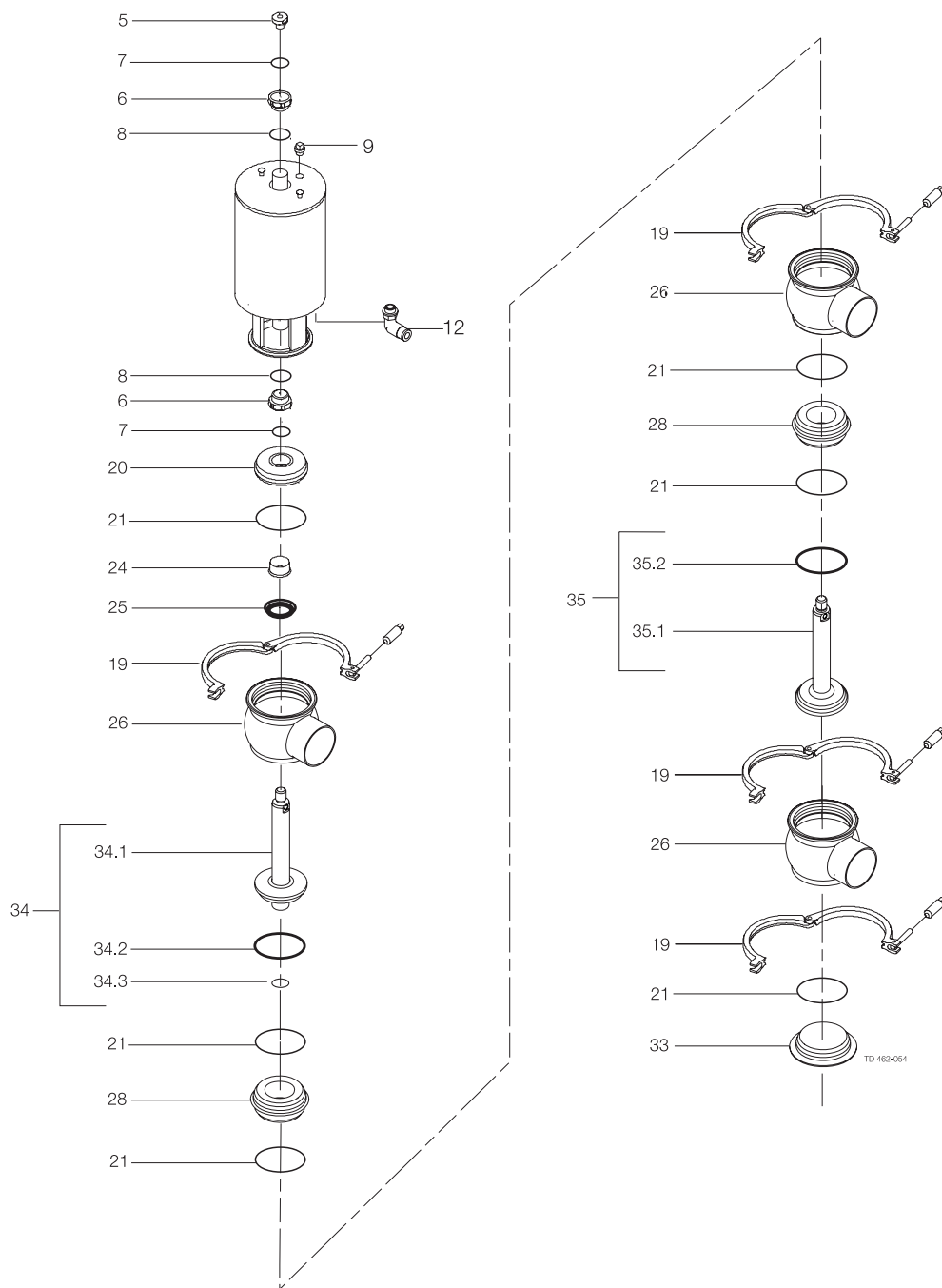
|   |                   |              |              |              |              |              |              |              |
|---|-------------------|--------------|--------------|--------------|--------------|--------------|--------------|--------------|
| □ | Service kit ..... | 9611-92-6500 | 9611-92-6500 | 9611-92-6500 | 9611-92-6500 | 9611-92-6500 | 9611-92-6500 | 9611-92-6500 |
|---|-------------------|--------------|--------------|--------------|--------------|--------------|--------------|--------------|

### Service kit for Product wetted parts, standard

|   |                         |              |              |              |              |              |              |
|---|-------------------------|--------------|--------------|--------------|--------------|--------------|--------------|
| ◆ | Service kit, EPDM ..... | 9611-92-6525 | 9611-92-6526 | 9611-92-6527 | 9611-92-6528 | 9611-92-6529 | 9611-92-6530 |
| ◆ | Service kit, HNBR ..... | 9611-92-6531 | 9611-92-6532 | 9611-92-6533 | 9611-92-6534 | 9611-92-6535 | 9611-92-6536 |
| ◆ | Service kit, FPM .....  | 9611-92-6537 | 9611-92-6538 | 9611-92-6539 | 9611-92-6540 | 9611-92-6541 | 9611-92-6542 |

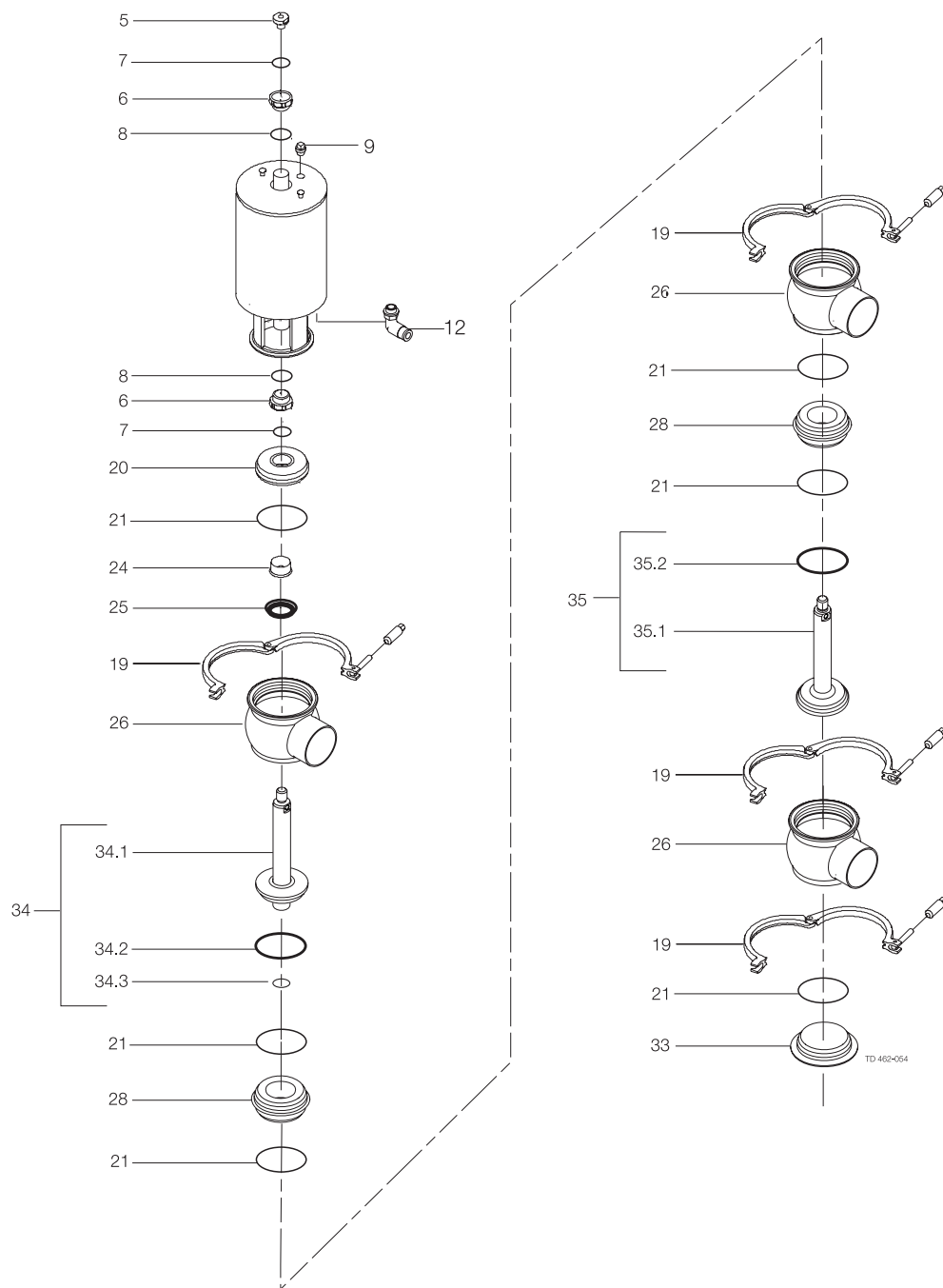
Parts marked with □◆ are included in the service kits.

Recommended spare parts: Service kits.



## Unique Single Seat Valve - Reverse Acting Change-over Valve 25-101.6 mm/DN25-100

| Pos               | Qty  | Denomination                       | DN 25<br>25 mm | DN 40<br>38 mm | DN 50<br>51 mm | DN 65<br>63.5 mm | DN 80<br>76.1 mm | DN 100<br>101.6 mm |
|-------------------|------|------------------------------------|----------------|----------------|----------------|------------------|------------------|--------------------|
| <b>Actuator</b>   |      |                                    |                |                |                |                  |                  |                    |
|                   |      | Actuator, complete (NO-RA) .....   | 9613-1548-06   | 9613-1548-06   | 9613-1548-07   | 9613-1548-08     | 9613-1548-09     | 9613-1548-10       |
|                   |      | Actuator, complete (NC-RA) .....   | 9613-1548-01   | 9613-1548-01   | 9613-1548-02   | 9613-1548-03     | 9613-1548-04     | 9613-1548-05       |
|                   |      | Actuator, complete (A/A) .....     | 9613-1548-11   | 9613-1548-11   | 9613-1548-12   | 9613-1548-13     | 9613-1548-14     | 9613-1548-15       |
| 5                 | 1    | Adapter .....                      | 9613-1274-01   | 9613-1274-01   | 9613-1274-01   | 9613-1274-01     | 9613-1274-01     | 9613-1274-01       |
| 6                 | □ 2  | Bushing .....                      |                |                |                |                  |                  |                    |
| 7                 | □ 2  | O-ring .....                       |                |                |                |                  |                  |                    |
| 8                 | □ 2  | O-ring .....                       |                |                |                |                  |                  |                    |
| 9                 | 1    | Plug .....                         | 9613-4141-01   | 9613-4141-01   | 9613-4141-01   | 9613-4141-01     | 9613-4141-01     | 9613-4141-01       |
| 12                | 1(2) | Air fitting .....                  | 9611-99-1988   | 9611-99-1988   | 9611-99-1988   | 9611-99-1988     | 9611-99-1988     | 9611-99-1988       |
| <b>Clamp</b>      |      |                                    |                |                |                |                  |                  |                    |
| 19                | 4    | Clamp .....                        | 9612-9393-03   | 9612-9393-03   | 9612-9393-04   | 9612-9393-05     | 9612-9393-06     | 9612-9393-07       |
| <b>Bonnet</b>     |      |                                    |                |                |                |                  |                  |                    |
| 20                | 1    | Bonnet .....                       | 9613-1271-02   | 9613-1271-02   | 9613-1271-03   | 9613-1271-04     | 9613-1271-05     | 9613-1271-06       |
| 21                | ◆ 6  | O-ring, EPDM (standard) .....      |                |                |                |                  |                  |                    |
|                   | 6    | O-ring, HNBR .....                 |                |                |                |                  |                  |                    |
|                   | 6    | O-ring, FPM .....                  |                |                |                |                  |                  |                    |
| 24                | 1    | Bushing .....                      | 9613-1250-02   | 9613-1250-02   | 9613-1250-02   | 9613-1250-02     | 9613-1250-02     | 9613-1250-02       |
| 25                | ◆ 1  | Lip seal, EPDM (standard) .....    |                |                |                |                  |                  |                    |
|                   | 1    | Lip seal, HNBR .....               |                |                |                |                  |                  |                    |
|                   | 1    | Lip seal, FPM .....                |                |                |                |                  |                  |                    |
| 33                | 1    | Lower bonnet .....                 | 9613-1301-02   | 9613-1301-02   | 9613-1301-03   | 9613-1301-04     | 9613-1301-05     | 9613-1301-06       |
| <b>Seat</b>       |      |                                    |                |                |                |                  |                  |                    |
| 28                | 2    | Seat .....                         | 9613-1275-01   | 9613-1275-02   | 9613-1275-03   | 9613-1275-04     | 9613-1275-05     | 9613-1275-06       |
| <b>Valve Body</b> |      |                                    |                |                |                |                  |                  |                    |
| 26                | 3    | Valve body, upper, 1 port ISO .... | 9613-1393-01   | 9613-1393-03   | 9613-1393-05   | 9613-1393-07     | 9613-1393-09     | 9613-1393-11       |
|                   | 3    | Valve body, upper, 2 ports ISO ... | 9613-1393-02   | 9613-1393-04   | 9613-1393-06   | 9613-1393-08     | 9613-1393-10     | 9613-1393-12       |
|                   | 3    | Valve body, upper, 1 port DIN .... | 9613-1394-01   | 9613-1394-03   | 9613-1394-05   | 9613-1394-07     | 9613-1394-09     | 9613-1394-11       |
|                   | 3    | Valve body, upper, 2 ports DIN ... | 9613-1394-02   | 9613-1394-04   | 9613-1394-06   | 9613-1394-08     | 9613-1394-10     | 9613-1394-12       |





**Unique Single Seat Valve - Reverse Acting Change-over Valve 25-101.6 mm/DN25-100**

| Pos               | Qty | Denomination   | DN 25<br>25 mm         | DN 40<br>38 mm         | DN 50<br>51 mm         | DN 65<br>63.5 mm         | DN 80<br>76.1 mm         | DN 100<br>101.6 mm         |
|-------------------|-----|--|------------------------|------------------------|------------------------|--------------------------|--------------------------|----------------------------|
| <b>Valve Plug</b> |     |  |                        |                        |                        |                          |                          |                            |
| 34                | 1   | Plug, change over upper RA, ISO, complete, EPDM (standard) ..... | 9613-1621-01           | 9613-1621-02           | 9613-1621-03           | 9613-1621-04             | 9613-1621-05             | 9613-1621-06               |
|                   | 1   | Plug, change over upper RA, ISO, complete, HNBR .....            | 9613-1621-13           | 9613-1621-14           | 9613-1621-15           | 9613-1621-16             | 9613-1621-17             | 9613-1621-18               |
|                   | 1   | Plug, change over upper RA, ISO, complete, FPM .....             | 9613-1621-25           | 9613-1621-26           | 9613-1621-27           | 9613-1621-28             | 9613-1621-29             | 9613-1621-30               |
|                   | 1   | Plug, change over upper RA, DIN, complete, EPDM (standard) ..... | 9613-1621-07           | 9613-1621-08           | 9613-1621-09           | 9613-1621-10             | 9613-1621-11             | 9613-1621-12               |
|                   | 1   | Plug, change over upper RA, DIN, complete, HNBR .....            | 9613-1621-19           | 9613-1621-20           | 9613-1621-21           | 9613-1621-22             | 9613-1621-23             | 9613-1621-24               |
|                   | 1   | Plug, change over upper RA, DIN, complete, FPM .....             | 9613-1621-31           | 9613-1621-32           | 9613-1621-33           | 9613-1621-34             | 9613-1621-35             | 9613-1621-36               |
| 34.1              | 1   | Plug, change over upper RA, ISO                                  | 9613-1502-01           | 9613-1401-02           | 9613-1401-03           | 9613-1401-04             | 9613-1401-05             | 9613-1401-06               |
|                   | 1   | Plug, change over upper RA, DIN                                  | 9613-1502-02           | 9613-1401-08           | 9613-1401-09           | 9613-1401-10             | 9613-1401-11             | 9613-1401-12               |
| 34.2♦             | 1   | Plug seal, EPDM (standard) .....                                 |                        |                        |                        |                          |                          |                            |
|                   | 1   | Plug seal, HNBR .....  |                        |                        |                        |                          |                          |                            |
|                   | 1   | Plug seal, FPM .....   |                        |                        |                        |                          |                          |                            |
| 34.3♦             | 1   | O-ring, EPDM (standard) .....                                    |                        |                        |                        |                          |                          |                            |
|                   | 1   | O-ring, HNBR .....   |                        |                        |                        |                          |                          |                            |
|                   | 1   | O-ring, FPM .....  |                        |                        |                        |                          |                          |                            |
| 35                | 1   | Plug, change over lower RA, ISO, complete, EPDM (standard) ..... | 9613-1622-01           | 9613-1622-02           | 9613-1622-03           | 9613-1622-04             | 9613-1622-05             | 9613-1622-06               |
|                   | 1   | Plug, change over lower RA, ISO, complete, HNBR .....            | 9613-1622-13           | 9613-1622-14           | 9613-1622-15           | 9613-1622-16             | 9613-1622-17             | 9613-1622-18               |
|                   | 1   | Plug, change over lower RA, ISO, complete, FPM .....             | 9613-1622-25           | 9613-1622-26           | 9613-1622-27           | 9613-1622-28             | 9613-1622-29             | 9613-1622-30               |
|                   | 1   | Plug, change over lower RA, DIN, complete, EPDM (standard) ..... | 9613-1622-07           | 9613-1622-08           | 9613-1622-09           | 9613-1622-10             | 9613-1622-11             | 9613-1622-12               |
|                   | 1   | Plug, change over lower RA, DIN, complete, HNBR .....            | 9613-1622-19           | 9613-1622-20           | 9613-1622-21           | 9613-1622-22             | 9613-1622-23             | 9613-1622-24               |
|                   | 1   | Plug, change over lower RA, DIN, complete, FPM .....             | 9613-1622-31           | 9613-1622-32           | 9613-1622-33           | 9613-1622-34             | 9613-1622-35             | 9613-1622-36               |
| 35.1              | 1   | Plug, change over lower RA, ISO                                  | 9613-1505-01           | 9613-1646-01           | 9613-1647-01           | 9613-1647-02             | 9613-1647-03             | 9613-1647-04               |
|                   | 1   | Plug, change over lower RA, DIN                                  | 9613-1505-02           | 9613-1646-02           | 9613-1647-05           | 9613-1647-06             | 9613-1647-07             | 9613-1647-08               |
| 35.2♦             | 1   | Plug seal, EPDM (standard) .....                                 | 9613-1500-01           | 9613-1500-04           | 9613-1500-07           | 9613-1500-10             | 9613-1500-13             | 9613-1500-16               |
|                   | 1   | Plug seal, HNBR .....  | 9613-1500-02           | 9613-1500-05           | 9613-1500-08           | 9613-1500-11             | 9613-1500-14             | 9613-1500-17               |
|                   | 1   | Plug seal, FPM .....   | 9613-1500-03           | 9613-1500-06           | 9613-1500-09           | 9613-1500-12             | 9613-1500-15             | 9613-1500-18               |
|                   |     |  | <b>DN 25<br/>25 mm</b> | <b>DN 40<br/>38 mm</b> | <b>DN 50<br/>51 mm</b> | <b>DN 65<br/>63.5 mm</b> | <b>DN 80<br/>76.1 mm</b> | <b>DN 100<br/>101.6 mm</b> |

**Service kit for Actuator**

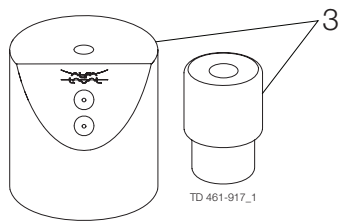
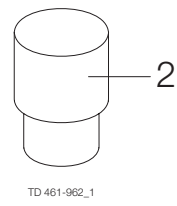
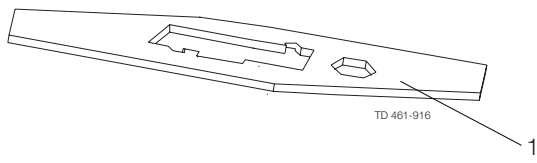
|   |                   |              |              |              |              |              |              |
|---|-------------------|--------------|--------------|--------------|--------------|--------------|--------------|
| □ | Service kit ..... | 9611-92-6500 | 9611-92-6500 | 9611-92-6500 | 9611-92-6500 | 9611-92-6500 | 9611-92-6500 |
|---|-------------------|--------------|--------------|--------------|--------------|--------------|--------------|

**Service kit for Product wetted parts, standard**

|   |                         |              |              |              |              |              |              |
|---|-------------------------|--------------|--------------|--------------|--------------|--------------|--------------|
| ♦ | Service kit, EPDM ..... | 9611-92-6597 | 9611-92-6598 | 9611-92-6599 | 9611-92-6600 | 9611-92-6601 | 9611-92-6602 |
| ♦ | Service kit, HNBR ..... | 9611-92-6603 | 9611-92-6604 | 9611-92-6605 | 9611-92-6606 | 9611-92-6607 | 9611-92-6608 |
| ♦ | Service kit, FPM .....  | 9611-92-6609 | 9611-92-6610 | 9611-92-6611 | 9611-92-6612 | 9611-92-6613 | 9611-92-6614 |

Parts marked with □♦ are included in the service kits.

Recommended spare parts: Service kits.



## Mounting Tool - Unique Single Seat Valve - Reverse Acting

| Pos | Qty | Denomination                                 | DN 25-65     | DN 80-100     |
|-----|-----|--|--------------|---------------|
|     |     |  | 25-63.5 mm   | 76.1-101.6 mm |
| 1   | 1   | Service tool for Maintainable actuator ..... | 31353-0219-1 | 9612-4550-01  |

TD 900-512

| Pos | Qty | Denomination                     | DN 25-100    |
|-----|-----|----------------------------------|--------------|
|     |     |                                  | 25-101.6 mm  |
| 2   | 1   | Tool for bushing (pos. 24) ..... | 9613-1609-01 |

TD 900-518

| Pos | Qty | Denomination                                 | DN 25         | DN 40        | DN 50        | DN 65        | DN 80        | DN 100       |
|-----|-----|--|---------------|--------------|--------------|--------------|--------------|--------------|
|     |     |  | 25 mm         | 38 mm        | 51 mm        | 63.5 mm      | 76.1 mm      | 101.6 mm     |
| 3   | 1   | Mounting tool for elastomer plug seals ..... | Not available | 9613-1729-01 | 9613-1729-02 | 9613-1729-02 | 9613-1729-03 | 9613-1729-03 |

TD 900-520

**How to contact Alfa Laval**

Contact details for all countries are continually updated on our website.

Please visit [www.alfalaval.com](http://www.alfalaval.com) to access the information direct.